



RSA3000 Series

Real-time Spectrum Analyzer

- Ultra-Real technology
- Frequency: up to 4.5 GHz
- Displayed average noise level (DANL): < -161 dBm (typical)
- Phase noise: < -102 dBc/Hz (typical)
- Level measurement uncertainty: < 1.0 dB
- 4.5 GHz tracking generator
- Min. RBW 1 Hz
- Up to 40 MHz real-time analysis bandwidth
- Multiple measurement modes
- Various advanced measurement functions
- EMI measurement application (option)
- Multiple trigger modes and trigger masks
- Density, spectrogram, and other display modes
- PC software options
- 10.1" capacitive multi-touch screen; supporting touch gestures
- USB, LAN, HDMI and other communication and display interfaces

RSA3000 Series Real-time Spectrum Analyzer

Built-in Linux operating system reliable and stable interface

10.1-inch capacitive multi-touch screen supporting touch gestures

Built-in quad-core processor high processing speed

Support keyboard and mouse operation

TG : 100kHz to 3.0/4.5GHz
-40 to 0dBm

RF: 9kHz to 3.0/4.5GHz



Product Dimensions: Width × Height × Depth = 410 mm × 224 mm × 135 mm

UltraReal

Based on the Ultra-Real technology, the high-speed real-time measurement mode allows you to acquire the signals in the analysis bandwidth seamlessly and make data analysis. It also provides various display modes, such as Spectrogram, Density, and PVT. Besides, FMT function is also available.

The Ultra-Real technology has the following features:

- **Seamless analysis**
 - Seamless I/Q data acquisition in the analysis bandwidth
 - Seamless spectrum analysis
- **FMT**
 - Frequency mask trigger (FMT) to trigger the measurement by sporadic or transient events in the spectrum
- **Composite displays**
 - Spectrogram for gap-free display of the spectrum
 - Density for you to visualize how frequently signals occur

► Specifications

Specifications are valid under the following conditions: the instrument is within the calibration period, is stored for at least two hours at 0°C to 50°C temperature, and is warmed up for 40 minutes. Unless otherwise noted, the specifications in this manual include the measurement uncertainty.

Typical: characteristic performance, which 80 percent of the measurement results will meet at room temperature (approximately 25°C). This data is not warranted and does not include the measurement uncertainty.

Nominal: the expected mean or average performance or a designed attribute (such as the 50 Ω connector). This data is not warranted and is measured at room temperature (approximately 25°C).

Measured: an attribute measured during the design phase which can be compared to the expected performance, such as the amplitude drift variation with time. This data is not warranted and is measured at room temperature (approximately 25°C).

NOTE: All charts in this manual are the measurement results of multiple instruments at room temperature unless otherwise noted. The specifications (except the tracking generator specifications) listed in this manual are those when the tracking generator is off.

Measurement Mode

Measurement Mode
General-Purpose Spectrum Analyzer (GPSA)
Real-time Spectrum Analyzer (RTSA)
EMI Measurement Application (EMI) Option RSA3000-EMI

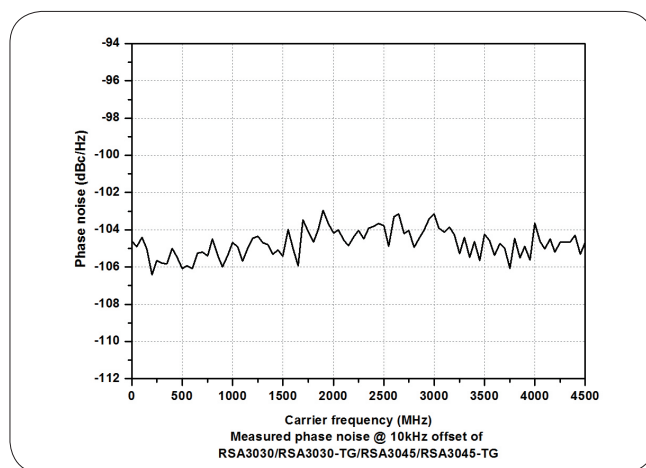
All Measurement Modes

Frequency					
		RSA3030	RSA3030-TG	RSA3045	RSA3045-TG
Frequency Range		9 kHz to 3.0 GHz		9 kHz to 4.5 GHz	
Internal Reference Frequency					
Reference Frequency		10 MHz			
Accuracy		±[(time since last calibration × aging rate) + temperature stability + calibration accuracy]			
Initial Calibration Accuracy	Standard	<1 ppm			
	Option OCXO-C08	<0.1 ppm			
Temperature Stability	0°C to 50°C , with the reference 25°C				
	Standard	<0.5 ppm			
	Option OCXO-C08	<0.005 ppm			
Aging Rate	Standard	<1 ppm/year			
	Option OCXO-C08	<0.03 ppm/year			

GPSA Mode

Frequency

Frequency Readout Accuracy		
Marker Frequency Resolution		span/(number of sweep points - 1)
Marker Frequency Uncertainty		$\pm(\text{marker frequency readout} \times \text{reference frequency accuracy} + 1\% \times \text{span} + 10\% \times \text{resolution bandwidth} + \text{marker frequency resolution})$
Frequency Counter		
Resolution		1 Hz
Uncertainty		$\pm(\text{marker frequency readout} \times \text{reference frequency accuracy} + \text{counter resolution})$
Frequency Span		
Range	Standard	0 Hz, 100 Hz to maximum frequency
	Option RSA3000-BW1	0 Hz, 10 Hz to maximum frequency
Resolution		2 Hz
Uncertainty		$\pm \text{span}/(\text{number of sweep points} - 1)$
SSB Phase Noise		
		20°C to 30°C, $f_c = 500$ MHz
Carrier Offset	1 kHz	<-90 dBc/Hz (typical)
	10 kHz	<-100 dBc/Hz, <-102 dBc/Hz (typical)
	100 kHz	<-100 dBc/Hz, <-102 dBc/Hz (typical)
	1 MHz	<-110 dBc/Hz, <-112 dBc/Hz (typical)

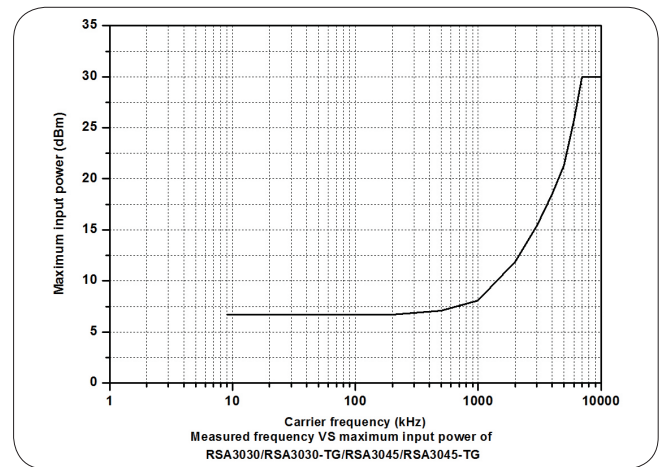
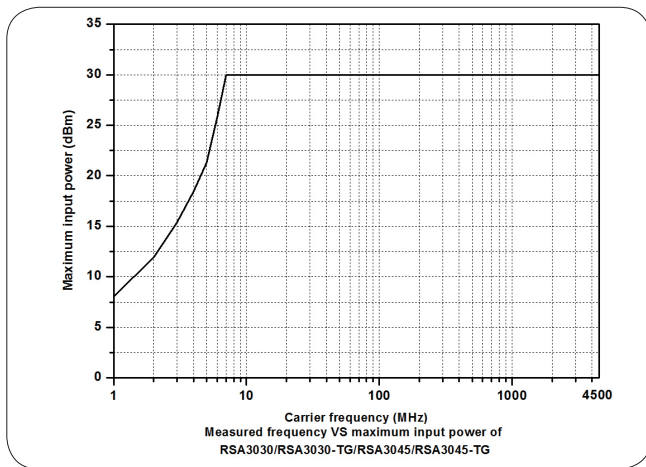


Residual FM		
		20°C to 30°C, RBW = VBW = 1 kHz
Residual FM		<10 Hz (nominal)
Bandwidth		
		Set "Sweep Time Rule" to "Accy"
Resolution Bandwidth (-3 dB) ^[1]	Standard	10 Hz to 3 MHz, in 1-3-10 sequence
	Option RSA3000-BW1	1 Hz to 10 MHz, in 1-3-10 sequence
RBW Accuracy		<5% (nominal)
Resolution Filter Shape Factor (60 dB: 3 dB)		<5 (nominal)
Video Bandwidth (-3 dB)		1 Hz to 10 MHz, in 1-3-10 sequence
Resolution Bandwidth (-6 dB) (Option RSA3000-EMC)		200 Hz, 9 kHz, 120 kHz, 1 MHz

Note: [1] When the tracking generator is enabled or in zero span mode, the available range of RBW is from 1 kHz to 10 MHz.

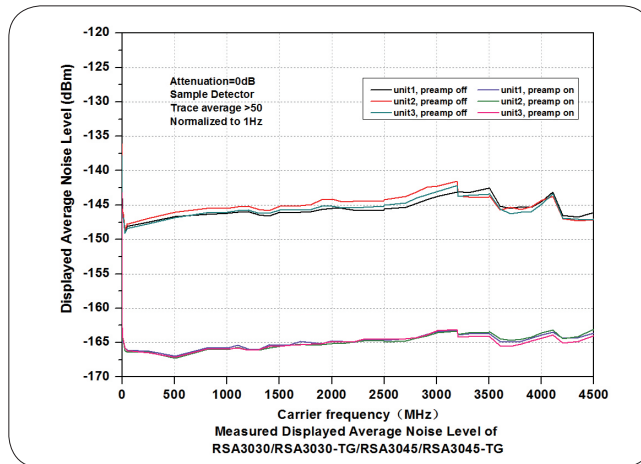
Amplitude

Measurement Range	
Range	$f_c \geq 10$ MHz DANL to +30 dBm
Maximum Safe Input Level ^[1]	
DC Voltage	50 V
CW RF Power	+30 dBm, attenuation ≥ 40 dB, preamp off. -10 dBm, attenuation = 20 dB, preamp on.
Maximum Damage Level	
CW RF Power	+33 dBm (2 W)

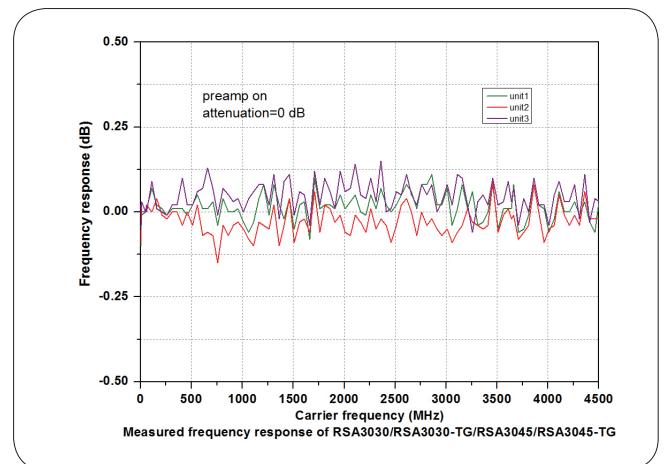
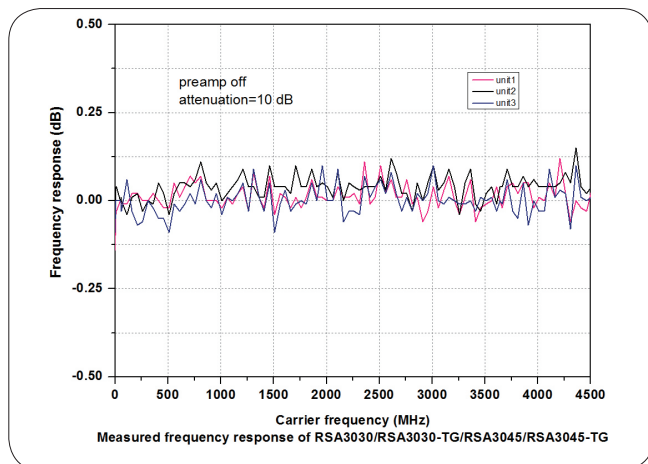


Displayed Average Noise Level (DANL)				
		RSA3030	RSA3030-TG	RSA3045
		RSA3045-TG		
		attenuation = 0 dB, sample detector, trace averages ≥ 50 , tracking generator off, normalized to 1 Hz, 20°C to 30°C, input impedance = 50 Ω .		
Preamp off	9 kHz to 100 kHz	<-120 dBm (typical)		<-120 dBm (typical)
	100 kHz to 20 MHz	<-135 dBm, <-140 dBm (typical)		<-135 dBm, <-140 dBm (typical)
	20 MHz to 2.7 GHz	<-138 dBm, <-141 dBm (typical)		<-138 dBm, <-141 dBm (typical)
	2.7 GHz to 3.0 GHz	<-136 dBm, <-141 dBm (typical)		<-136 dBm, <-141 dBm (typical)
	3.0 GHz to 4.5 GHz			<-136 dBm, <-140 dBm (typical)
Preamp on	100 kHz to 20 MHz	<-152 dBm, <-160 dBm (typical)		<-152 dBm, <-160 dBm (typical)
	20 MHz to 2.7 GHz	<-158 dBm, <-161 dBm (typical)		<-158 dBm, <-161 dBm (typical)
	2.7 GHz to 3.0 GHz	<-156 dBm, <-161 dBm (typical)		<-156 dBm, <-161 dBm (typical)
	3.0 GHz to 4.5 GHz			<-154 dBm, <-159 dBm (typical)

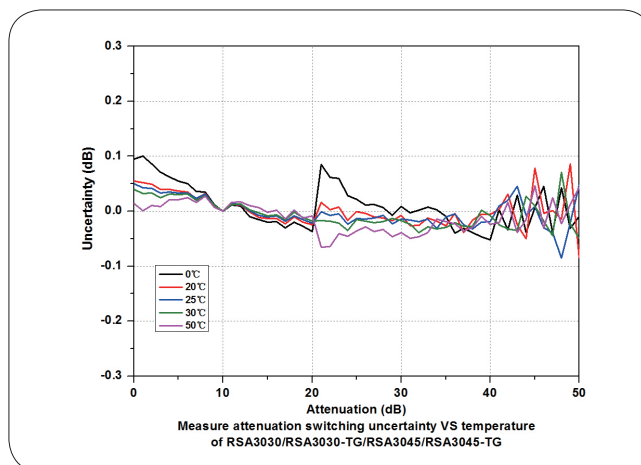
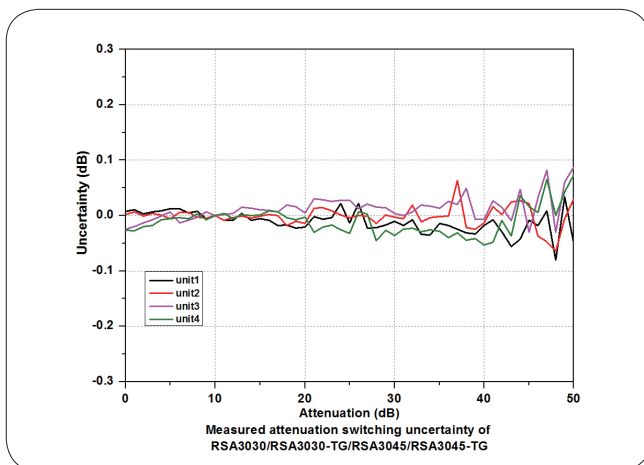
Note: [1] When $f_c < 10$ MHz, the maximum safe input level is decreased.



Level Display				
Logarithmic Scale		1 dB to 200 dB		
Linear Scale		0 to reference level		
Number of Display Points		801		
Number of Traces		6		
Trace Detector		normal, pos-peak, neg-peak, sample, RMS average, voltage average, and quasi-peak (Option RSA3000-EMC)		
Trace Function		clear write, max hold, min hold, average, view, blank		
Scale Unit		dBm, dBmV, dBμV, nV, μV, mV, V, nW, μW, mW, W		
Frequency Response				
		RSA3030	RSA3030-TG	RSA3045
		RSA3045-TG		
		attenuation = 10 dB, relative to 50 MHz, 20°C to 30°C		
Preamp off	100 kHz to 3.0 GHz	<0.7 dB, <0.5 dB (typical)		<0.7 dB, <0.5 dB (typical)
	3.0 GHz to 4.5 GHz			<0.9 dB, <0.5 dB (typical)
		attenuation = 0 dB, relative to 50 MHz, 20°C to 30°C		
Preamp on	100 kHz to 3.0 GHz	<1.0 dB, <0.5 dB (typical)		<1.0 dB, <0.5 dB (typical)
	3.0 GHz to 4.5 GHz			<1.2 dB, <0.5 dB (typical)



Input Attenuation Switching Uncertainty	
Setting Range	0 dB to 50 dB, in 1 dB step
Switching Uncertainty	$f_c = 50$ MHz, relative to 10 dB, preamp off, 20°C to 30°C
	<0.3 dB



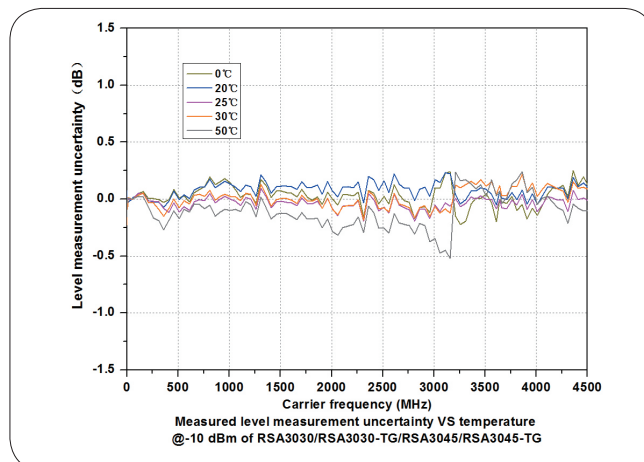
Absolute Amplitude Accuracy	
Uncertainty	$f_c = 50$ MHz, peak detector, preamp off, attenuation = 10 dB, input signal level = -10 dBm, 20°C to 30°C
	<0.3 dB

Reference Level		
Range	Logarithmic Scale	-170 dBm to +30 dBm, in 0.01 dB step
	Linear Scale	707 pV to 7.07 V, 0.11% (0.01 dB) resolution

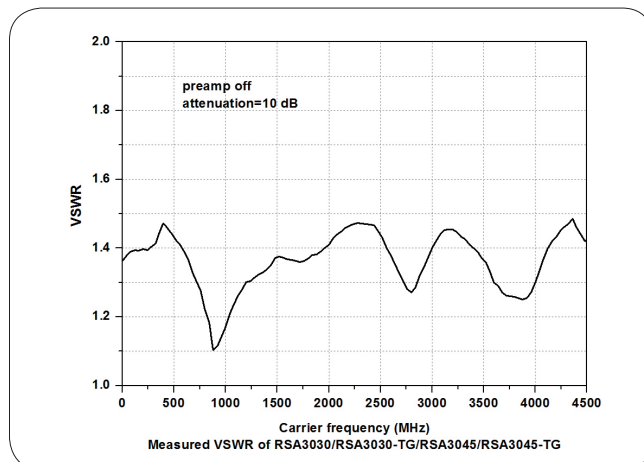
RBW Switching		
Uncertainty	Set "Sweep Time Rule" to "Accy", relative to 30 kHz RBW	
	1 Hz to 1 MHz	<0.1 dB
	3 MHz, 10 MHz	<0.3 dB

Preamp (Option RSA3000-PA)				
	RSA3030	RSA3030-TG	RSA3045	RSA3045-TG
Frequency Range	100 kHz to 3.0 GHz		100 kHz to 4.5 GHz	
Gain	20 dB (nominal)			

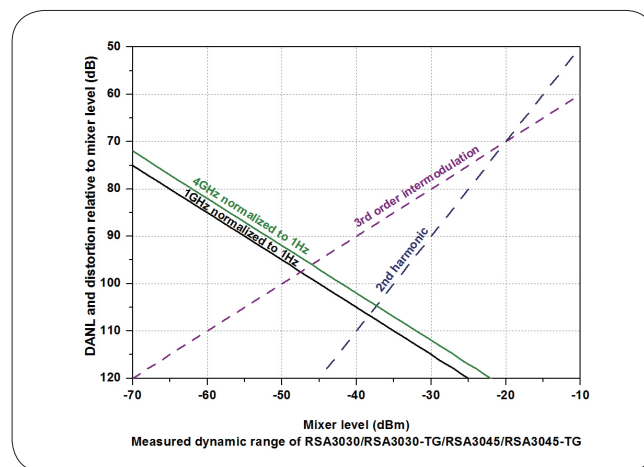
Level Measurement Uncertainty	
Level Measurement Uncertainty	95% confidence level, S/N > 20 dB, RBW = VBW = 1 kHz, preamp off, attenuation = 10 dB, -50 dBm < input level ≤ 0 dBm, $f_c > 10$ MHz, 20°C to 30°C
	1.0 dB (nominal)



RF Input VSWR				
		RSA3030	RSA3030-TG	RSA3045
		RSA3045-TG		
		attenuation ≥ 10 dB, preamp off		
VSWR	300 kHz to 3.0 GHz	<1.6 (nominal)		<1.6 (nominal)
	3.0 GHz to 4.5 GHz			<1.8 (nominal)



Distortion	
Second Harmonic Intercept (SHI)	$f_c \geq 50$ MHz, input signal level = -20 dBm, attenuation = 0 dB, preamp off. +45 dBm
Third-order Intercept (TOI)	$f_c \geq 50$ MHz, two -20 dBm tones at input mixer spaced by 200 kHz, attenuation = 0 dB, preamp off. +10 dBm, +15 dBm (typical)
1 dB Gain Compression (P_{1dB}) ^[1]	$f_c \geq 50$ MHz, attenuation = 0 dB, preamp off 0 dBm (nominal)



Spurious Response	
Residual Response	input terminated with a 50 Ω load, attenuation = 0 dB, 20°C to 30°C <-90 dBm, <-100 dBm (typical)
Intermediate Frequency	<-60 dBc
System-related Sideband	referenced to local oscillators, referenced to A/D conversion, referenced to subharmonic of first LO, referenced to harmonic of first LO <-60 dBc
Input-related Spurious	mixer level = -30 dBm <-60 dBc

Note: [1] The frequency interval of the two-tone signals should be greater than 10 MHz.

Sweep

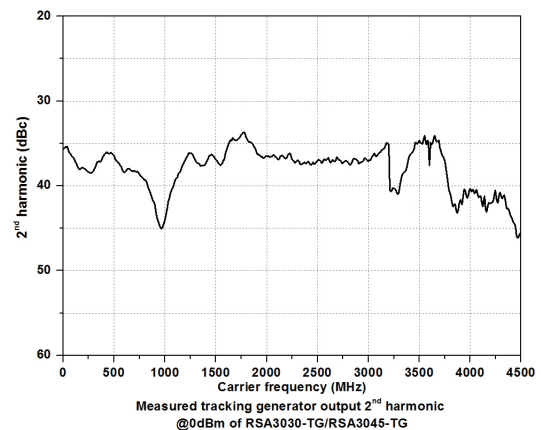
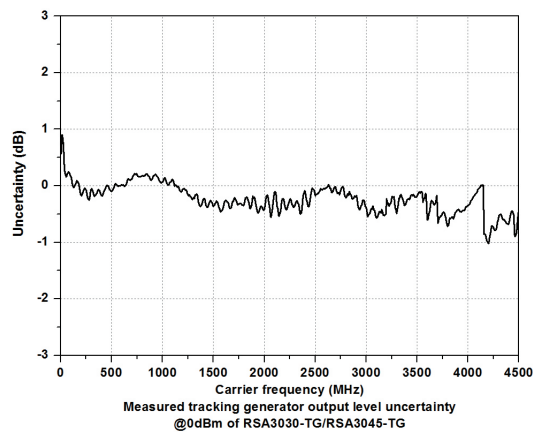
Sweep		
Sweep Time	span \geq 10 Hz	1 ms to 4,000 s
	zero span	1 μ s to 6,000 s
Sweep Time Uncertainty	span \geq 10 Hz, RBW \geq 1 kHz	5% (nominal)
	zero span (sweep time > 1 ms)	5% (nominal)
Sweep Mode		continue, single

Trigger

Trigger		
Trigger Source		free run, external 1, external 2, video
Trigger Delay	span \geq 10 Hz	0 to 500 ms
	zero span	0 to 500 ms

Tracking Generator

Tracking Generator Output				
	RSA3030	RSA3030-TG	RSA3045	RSA3045-TG
Frequency Range	-	100 kHz to 3.0 GHz	-	100 kHz to 4.5 GHz
Output Level Range	-	-40 dBm to 0 dBm	-	-40 dBm to 0 dBm
Output Level Resolution	-	1 dB	-	1 dB
Output Flatness	relative to 50 MHz			
	-	± 3 dB (nominal)	-	± 3 dB (nominal)



RTSA Mode

Real-time Analysis Bandwidth	10 MHz					
	25 MHz (Option RSA3000-B25)					
	40 MHz (Option RSA3000-B40)					
Min. Signal Duration for 100% POI at the Full-Scale Accuracy	maximum span, default Kaiser Window					
	9.3 μs					
	7.82 μs (Option RSA3000-B25)					
	7.45 μs (Option RSA3000-B40)					
Trace Detector	pos-peak, neg-peak, sample, average					
Number of Traces	6					
Window Type	Hanning, Blackman-Harris, Rectangular, Flattop, Kaiser, and Gaussian					
Resolution Bandwidth	provides 6 RBWs for each window, except the Rectangular; for Kaiser window					
	Span	Min. bandwidth		Max. bandwidth		
	40 MHz	100 kHz		3.21 MHz		
	25 MHz	62.8 kHz		2.01 MHz		
	10 MHz	25.1 kHz		804 kHz		
	1 MHz	2.51 kHz		80.4 kHz		
	100 kHz	251 Hz		8.04 kHz		
Max. Sample Rate	51.2 Msa/s					
FFT Rate	146,484/s (nominal)					
Number of Markers	8					
Amplitude Resolution	0.01 dB					
Frequency Point	801					
Acquisition Time	Max. sample rate					
	>156.5 μs					
Min. Signal Duration for 100% POI at Different RBWs						
	Duration Time (μs)					
Span	RBW1	RBW2	RBW3	RBW4	RBW5	RBW6
40 GHz	26.9	16.9	11.9	9.32	8.07	7.45
25 MHz	38.9	22.9	14.9	10.9	8.82	7.82
10 MHz	86.8	46.8	26.8	16.8	11.8	9.30
1 MHz	807	407	207	107	56.3	31.3
Amplitude						
Amplitude Flatness	±0.5 dB ^[1] (nominal)					
SFDR	<-50 dBc/Hz (typical)					
UltraReal Density						
Probability Range	0 to 100% (with a step of 0.1%)					
Min. Span	5 kHz					
Persistence Duration	32 ms to 10 s					
UltraReal Spectrogram						
History Depth	8,192					
Dynamic Range Covered by Bitmap Color	200 dB					
UltraReal PVT						
Min. Acquisition Time	187.9 μs					
Max. Acquisition Time	40 s					
Trigger						
Trigger Source	free run, external 1, external 2, power(time), FMT					
UltraReal FMT						
Trigger Diagram	density, spectrogram, normal, PVT					
Trigger Resolution	0.5 dB (nominal)					
Trigger Criteria	enter, leave, inside, outside, enter-leave, leave-enter					

Note:[1] Only applicable to the Normal measurement.

EMI Mode (Option RSA3000-EMI)

EMI Resolution Bandwidth	
Resolution Bandwidth (-3 dB)	100 Hz to 10 MHz, in 1-3-10 sequence
Resolution Bandwidth (-6 dB)	200 Hz, 9 kHz, 120 kHz, 1 MHz
EMI Detector	
Detector	pos-peak, neg-peak, average, quasi-peak, CISPR average, RMS average
EMI Key Feature	
Key Feature	CISPR 16-1-1 detectors
	CISPR 16-1-1 bandwidths
	log and linear display
	signal table
	scan table
	simultaneous detectors
	automatic limit testing
	measure at marker
	delta to limit
	step and swept scans
	report generation

General Specifications

Display		
Type	capacitive multi-touch screen	
Resolution	1024 × 600 pixels	
Size	10.1"	
Color	24-bit color	
Printer Supported		
Protocol	network printer	
Mass Memory		
Mass Memory	Internal Storage	512 MB (nominal)
	External Storage	USB storage device (not supplied)
Power		
Input Voltage Range, AC	100 V to 240 V (nominal)	
AC Frequency	45 Hz to 440 Hz	
Power Consumption	55 W (typical), max. 90 W with all options	
Environment		
Temperature	Operating Temperature Range	0°C to 50°C
	Storage Temperature Range	-20°C to 70°C
Humidity	0°C to 30°C	≤95% RH
	30°C to 40°C	≤75% RH
Altitude	Operating Height	below 3,048 m (10,000 feet)
Electromagnetic Compatibility and Safety		
EMC	complies with EMC Directive 2014/30/EU, complies with or above the standard specified in IEC61326-1:2013/EN61326-1:2013 Group 1 Class A	
	CISPR 11/EN 55011	
	IEC 61000-4-2:2008/EN 61000-4-2	±4.0 kV (contact discharge), ±8.0 kV (air discharge)
	IEC 61000-4-3:2002/EN 61000-4-3	3V/m (80 MHz to 1 GHz); 3V/m (1.4 GHz to 2 GHz); 1V/m (2.0 GHz to 2.7 GHz)
	IEC 61000-4-4:2004/EN 61000-4-4	1 kV power
	IEC 61000-4-5:2001/EN 61000-4-5	0.5 kV (phase-to-neutral voltage); 1 kV (phase-to-earth voltage); 1 kV (neutral-to-earth voltage)
	IEC 61000-4-6:2003/EN 61000-4-6	3 V, 0.15 to 80 MHz
	IEC 61000-4-11:2004/EN 61000-4-11	voltage dip: 0% UT during half cycle; 0% UT during 1 cycle; 70% UT during 25 cycles short interruption: 0% UT during 250 cycles
Safety	complies with IEC 61010-1:2010 (Third Edition)/EN 61010-1:2010, UL 61010-1:2012 R4.16 and CAN/CSA-C22.2 No. 61010-1-12+ GI1+ GI2	
Environmental Stress	Samples of this product have been type tested in accordance with RIGOL's reliability test regulations and verified to be robust against the environmental stresses of storage, transportation, and end-use; those stresses include, but are not limited to, temperature, humidity, shock, and vibration. The test methods are compliant with standards specified in GB/T6587 Class 2 and MILPRF-28800F Class 3.	
Size		
(W x H x D)	410 mm × 224 mm × 135 mm (16.14" × 8.82" × 5.32")	
Weight		
Without Tracking Generator	4.65 kg (10.25 lb)	
With Tracking Generator	4.95 kg (10.91 lb)	
Calibration Interval		
Recommended Calibration Interval	18 months	

Input/Output

Front Panel Connector		
RF Input	Impedance	50 Ω (nominal)
	Connector	N-type female
TG Output	Impedance	50 Ω (nominal)
	Connector	N-type female
Internal/External Reference		
Internal Reference	Frequency	10 MHz
	Output Level	+3 dBm to +10 dBm, +7 dBm (typical)
	Impedance	50 Ω (nominal)
	Connector	BNC female
External Reference	Frequency	10 MHz \pm 5 ppm
	Input Level	0 dBm to +10 dBm
	Impedance	50 Ω (nominal)
	Connector	BNC female
External Trigger Input/Output		
External Trigger Input 1	Impedance	≥ 1 k Ω (nominal)
	Connector	BNC female
	Level	5 V TTL level
External Trigger Input 2/Trigger Output	Impedance	on trigger input ≥ 1 k Ω (nominal)
		on trigger output 50 Ω (nominal)
	Connector	BNC female
	Level	5 V TTL level
IF Output		
IF Output	Frequency	430 MHz \pm 20 MHz (nominal)
	Amplitude	RF input power (P_{RFIn}) \leq -10 dBm, attenuation = 0, preamp off.
		50MHz, $P_{RFIn} \pm 4$ dB (nominal)
		other frequency, $P_{RFIn} \pm 4$ dB + RF frequency response (nominal)
	Impedance	50 Ω (nominal)
	Connector	SMB male
Communication Interface		
USB Host (4 ports)	Connector	A plug
	Protocol	version 2.0
USB Device	Connector	B plug
	Protocol	version 2.0
LAN	Connector	100/1000Base, RJ-45
	Protocol	LXI Core 2011 Device
HDMI	Connector	A plug
	Protocol	HDMI 1.4b

► Order Information

	Description	Order No.
Model	Real-time Spectrum Analyzer, 9 kHz to 3.0 GHz	RSA3030
	Real-time Spectrum Analyzer, 9 kHz to 4.5 GHz	RSA3045
	Real-time Spectrum Analyzer, 9 kHz to 3.0 GHz (with TG installed when leaving the factory)	RSA3030-TG
	Real-time Spectrum Analyzer, 9 kHz to 4.5 GHz (with TG installed when leaving the factory)	RSA3045-TG
Standard Accessories	Quick Guide (hard copy)	-
	Power Cord	-
Option	EMI Measurement Application (includes RSA3000-EMC)	RSA3000-EMI
	Preamplifier (PA)	RSA3000-PA
	High Stability Clock	OCXO-C08
	RBW 1 Hz to 10 MHz	RSA3000-BW1
	Real-time Analysis Bandwidth 25 MHz	RSA3000-B25
	Real-time Analysis Bandwidth 40 MHz	RSA3000-B40
	Advanced Measurement Kit	RSA3000-AMK
	EMC Filter and Quasi-Peak Detector Kit	RSA3000-EMC
	Spectrum Analyzer PC Software	Ultra Spectrum
	EMI Pre-compliance Test Software	S1210 EMI Pre-compliance Software
Optional Accessories	Include: N-SMA cable, BNC-BNC cable, N-BNC adaptor, N-SMA adaptor, 75 Ω -50 Ω adaptor, 900 MHz/1.8 GHz antenna (2pcs), 2.4 GHz antenna (2pcs)	DSA Utility Kit
	Include: N(F)-N(F) adaptor (1pcs), N(M)-N(M) adaptor (1pcs), N(M)-SMA(F) adaptor (2pcs), N(M)-BNC(F) adaptor (2pcs), SMA(F)-SMA(F) adaptor (1pcs), SMA(M)-SMA(M) adaptor (1pcs), BNC T type adaptor (1pcs), 50 Ω SMA load (1pcs), 50 Ω BNC impedance adaptor (1pcs)	RF Adaptor Kit
	Include: 50 Ω to 75 Ω adaptor (2pcs)	RF CATV Kit
	Include: 6 dB attenuator (1pcs), 10 dB attenuator (2pcs)	RF Attenuator Kit
	30 dB high-power attenuator, with the max power of 100 W	ATT03301H
	N(M)-N(M) RF Cable	CB-NM-NM-75-L-12G
	N(M)-SMA(M) RF Cable	CB-NM-SMAM-75-L-12G
	VSWR Bridge, 1 MHz to 3.2 GHz	VB1032
	VSWR Bridge, 2 GHz to 8 GHz	VB1080
	Near-field Probe	NFP-3
	Rack Mount Kit	RM6041
	USB Cable	CB-USBA-USBB-FF-150

Warranty

Three years for the mainframe

INDONESIA DISTRIBUTOR :
PT. UNITRONIC JAYA
Jl. Batununggal Indah 4 No. 75
Bandung - 40266
Jawa Barat - Indonesia
Tel :+62-22-7538688
sales@unitronicjaya.com
www.unitronicjaya.com

HEADQUARTER

RIGOL TECHNOLOGIES, INC.
No.8 Keling Road, New District,Suzhou,
JiangSu,P.R.China
Tel:+86-400620002
Email:info@rigol.com

EUROPE

RIGOL TECHNOLOGIES EU GmbH
Lindbergh str. 4
82178 Puchheim
Germany
Tel: 0049-89/89418950
Email: info-europe@rigol.com

NORTH AMERICA

RIGOL TECHNOLOGIES, USA INC.
8140 SW Nimbus Ave.
Beaverton, OR 97008
Tel: 877-4-**RIGOL**-1
Fax: 877-4-**RIGOL**-1
Email: info@rigol.com

JAPAN

RIGOL TECHNOLOGIES JAPAN, LLC
MJ Bldg. 3F, 1-7-4 Minato, Chuou-ku,
Tokyo, Japan 104-0043
Tel: +81-3-6262-8932
Fax: +81-3-6262-8933
Email: info-japan@rigol.com

RIGOL® is the registered trademark of **RIGOL** Technologies, Inc. Product information in this document subject to update without notice. For the latest information about **RIGOL**'s products, applications and services, please contact local **RIGOL** office or access **RIGOL** official website: www.rigol.com